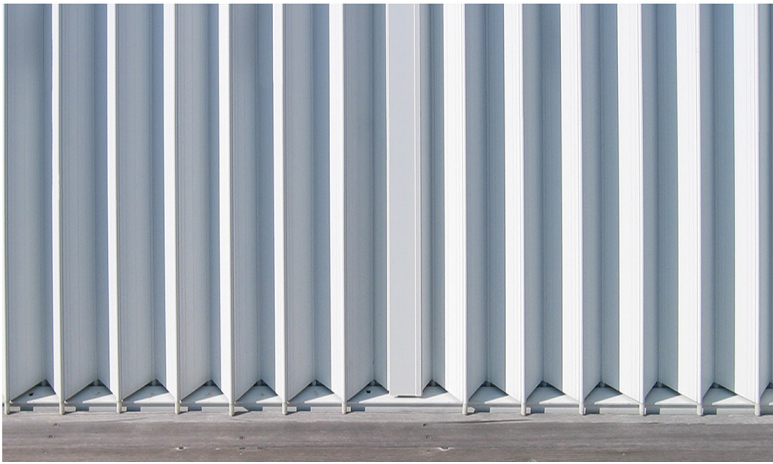


Accordion Shutters consist of vertical stacking aluminum blades with a horizontal gliding function.

Accordion Shutters have been tested to meet or exceed the most stringent requirements for Hurricane Shutters in the industry, such as:

- Florida Building Code (FBC) Non HVHZ
- Florida Building Code (FBC) HVHZ
- Dade and Broward
- International Building Code (IBC)
- International Residential Code (IRC)
- Miami-Dade County



ACCORDION SHUTTER



Features:

- Heavy duty lock centermates. No locking pins needed.
- KEY or THUMB locking cylinders
- Lower system cost
- Faster assembly and installation times
- Direct mount track end starters
- Improved corrosion resistant hardware.
- All tracks are heavy duty available in ceiling, 1" and 2" headers and walkover and adjustable tracks for doorways.
- NO LIGHT DUTY HERE! Over 26% heavier gauge material than most of the competition.

Benefits:

- Built to withstand hurricane force winds that exceed 140 psf equivalent to 227 mph.
- Made from high quality extruded aluminum and stainless steel parts.
- Encloses entire balconies or lanais with one shutter.
- Protect patio doors from rain and wind damage.
- Steel installations available on our approval prints. No site specific engineering required. (1/8" min. thickness applies).
- Up to 36% considerably higher design pressures than our competition.

HEAVY DUTY COMMERCIAL LOCKS STANDARD



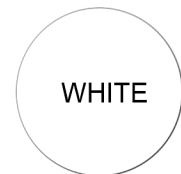
Powder Coat Color Options



THUMB TURN



KEY LOCK



WHITE



BEIGE



BRONZE



CREAM